

New 10th Floor Spec Suites



The Mills Building

220 Montgomery Street,
San Francisco, CA
94104

NEW 10th Floor Spec Suites



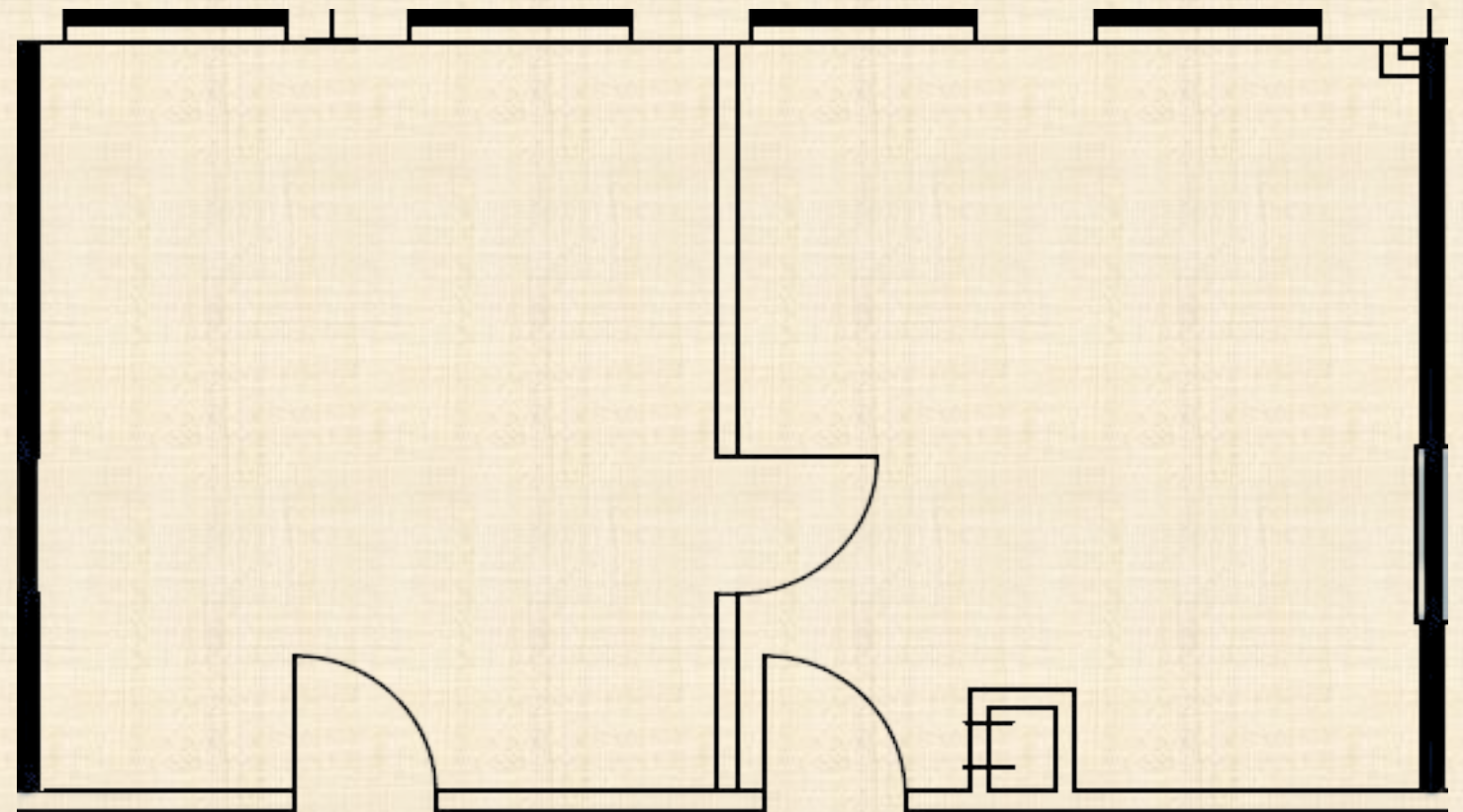
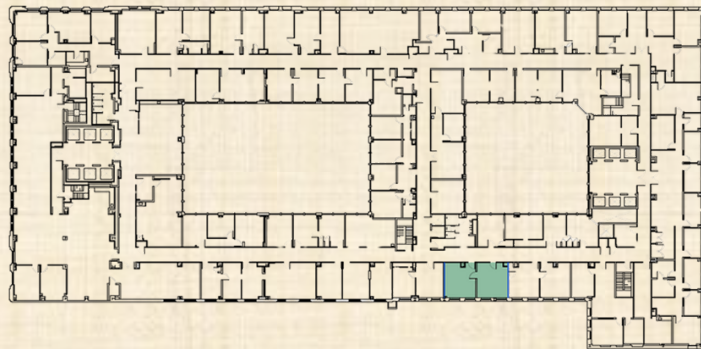
Suite	RSF	Description	Asking Price (PerMonth)	Available
1012	640	A tandem office suite with stunning Fi-Di views, abundant natural light, excellent storage, and kitchenette.	\$2,560	February 28 th
1013	258	An office with courtyard outlooks, abundant natural light, a spacious open layout, and ample storage.	\$1,032	LEASED
1019	1,634	A spacious office suite featuring a corner office, two glass-fronted offices, excellent storage, bright natural light, courtyard views, and a large open workspace.	\$7,353	February 28 th
1028	279	A quiet office suite featuring a large open space with bright natural light and stunning views of Fi-Di.	\$1,116	LEASED
1045	875	A large open space with 15-foot exposed ceilings, bright natural light, New LED lights, and excellent elevator identity.	\$4,624	February 28 th
1064	588	A quiet office suite featuring a large open space, bright natural light, and excellent elevator identity.	\$2,352	February 28 th
1070	326	A quiet office suite with a spacious an open layout, crown molding, abundant natural light, and great elevator identity.	\$1,463	February 28 th
1072	817	A tandem office suite with 12-foot-high ceilings, excellent storage, and bright natural light.	\$3,268	February 28 th
1077	610	A tandem office suite with bright natural light, peaceful courtyard outlooks, and a quiet atmosphere.	\$2,440	LEASED
1093	955	A spacious office suite featuring a large open area, a large conference, excellent elevator identity, and abundant natural light.	\$3,820	February 28 th

Suite 1012

640 RSF



- New Finishes
- Free High-Speed Wi-Fi
- Tandem Office
- Transamerica Building Views
- Bright Natural Light
- Kitchenette
- Excellent Storage



Suite 1013

258 RSF



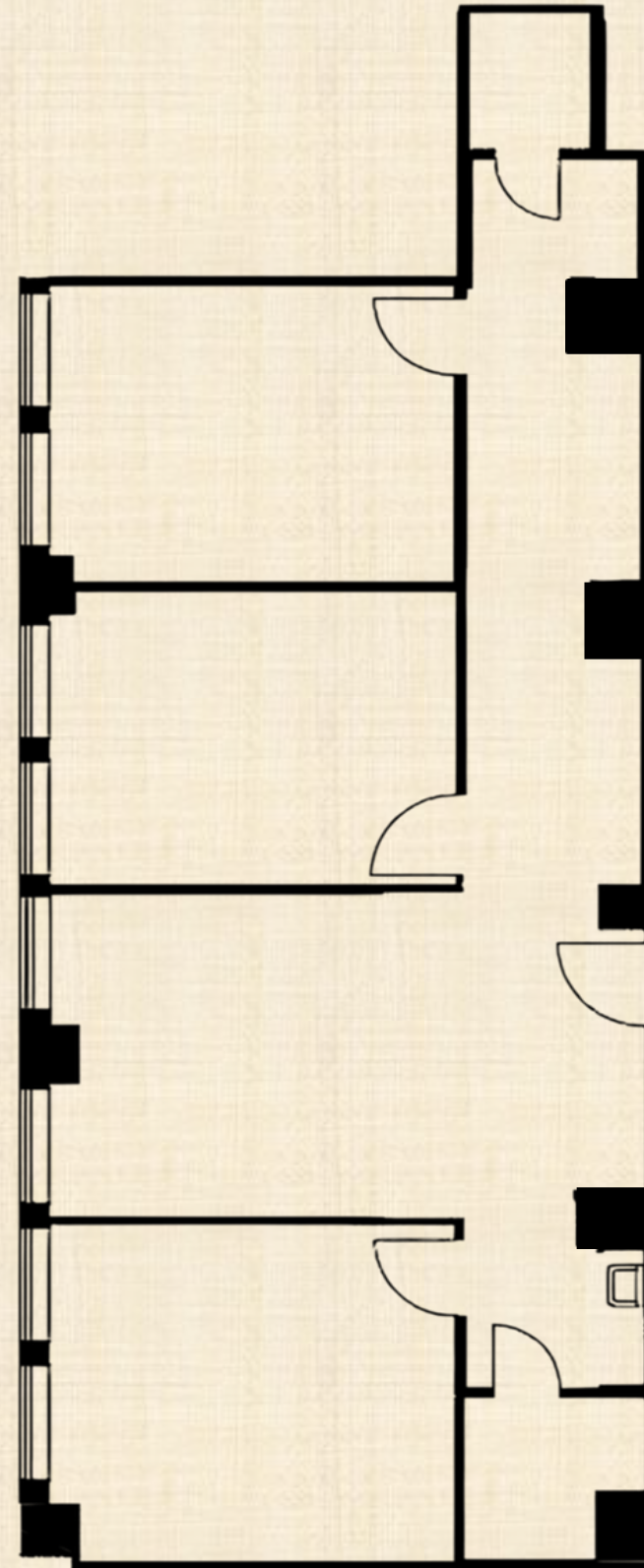
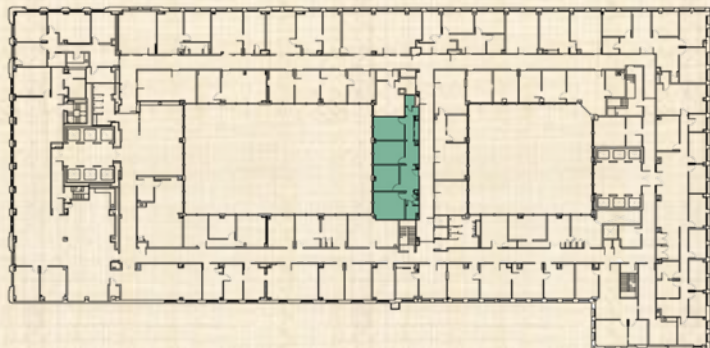
- Courtyard Outlooks
- Bright Natural Light
- Large Open Space
- Great Storage
- Waiting Room



Suite 1019

1,634 RSF

- New Finishes
- High-Speed Wi-Fi
- 2 New Glass Fronted Offices
- 1 Private Corner Office
- 12ft Ceilings
- Kitchenette
- Excellent Storage
- Bright Natural Light
- Large Open Space

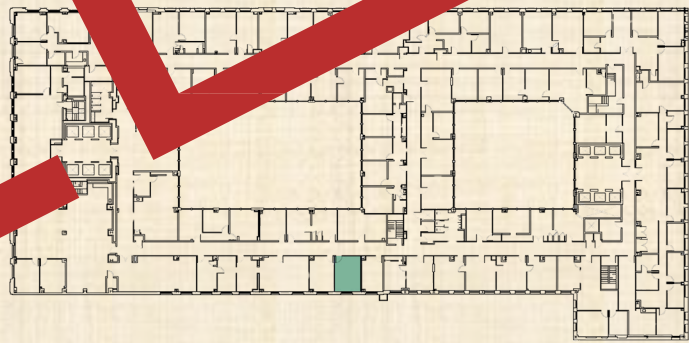
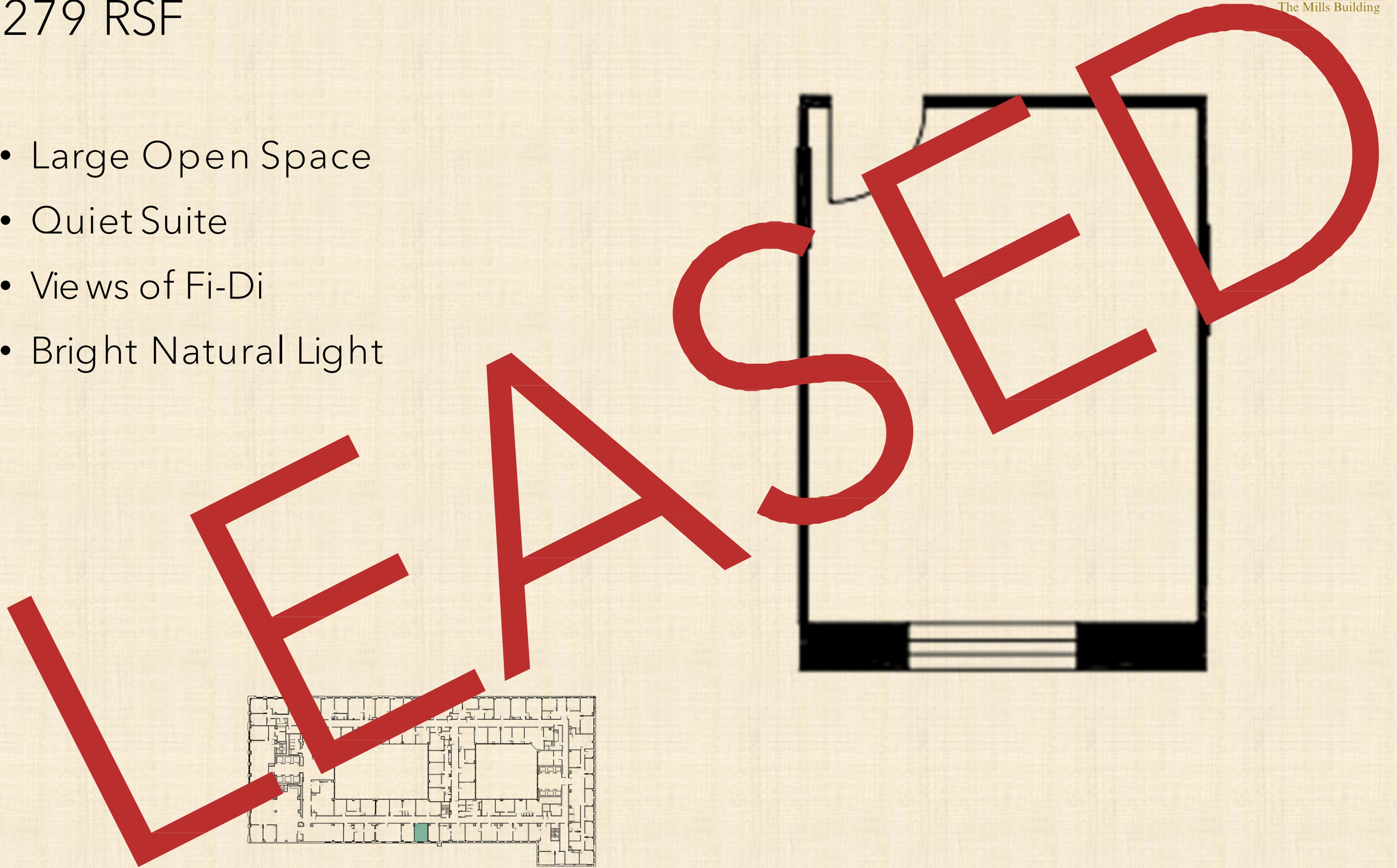


Suite 1028

279 RSF



- Large Open Space
- Quiet Suite
- Views of Fi-Di
- Bright Natural Light

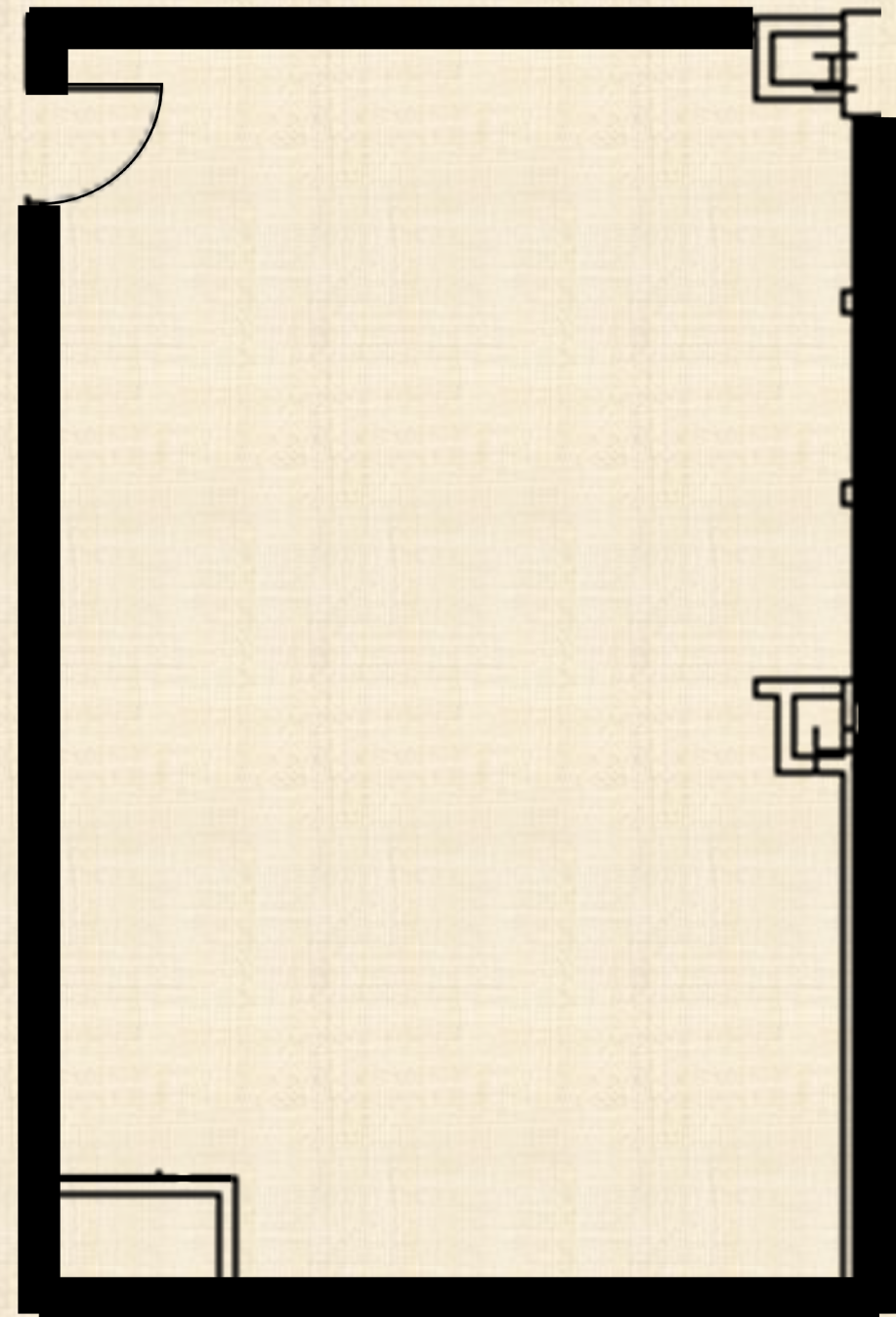
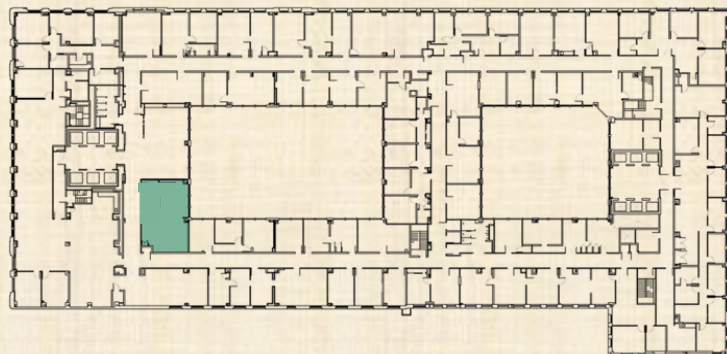


Suite 1045

875 RSF



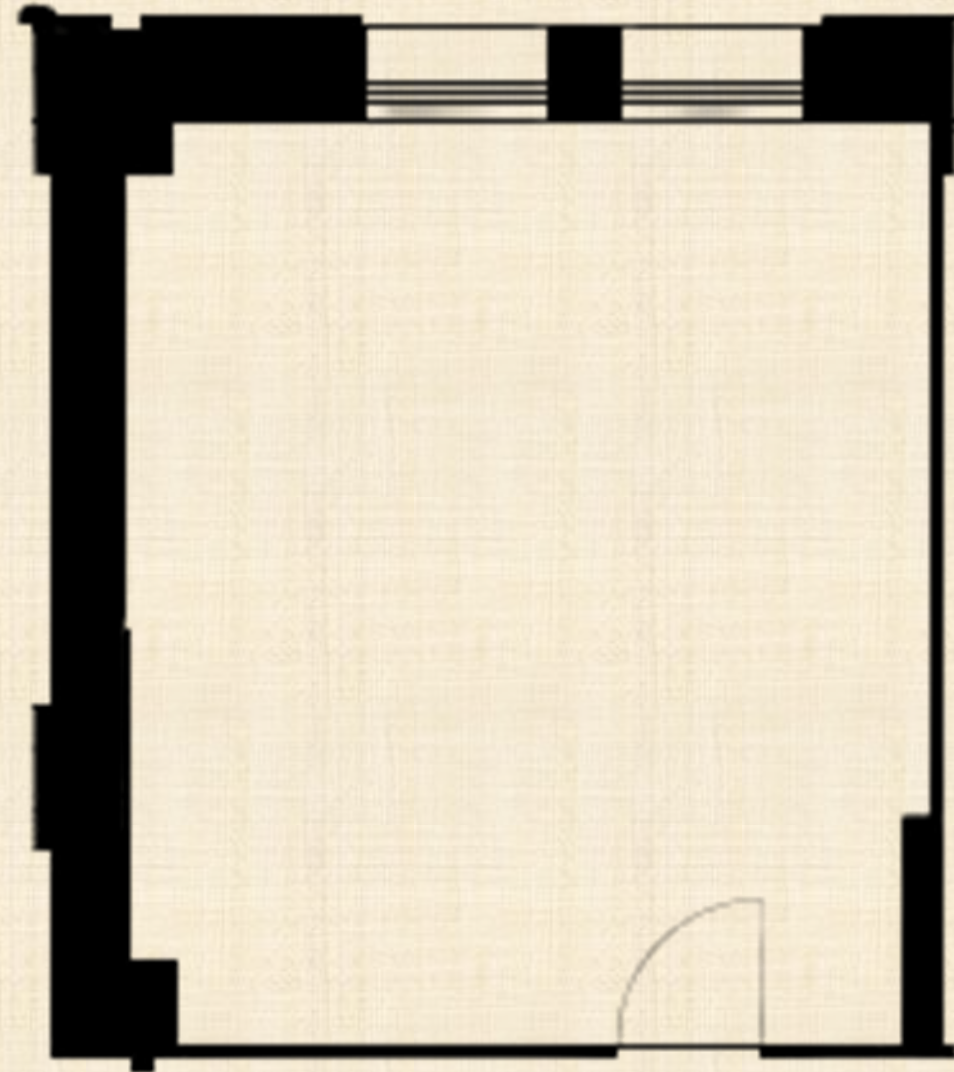
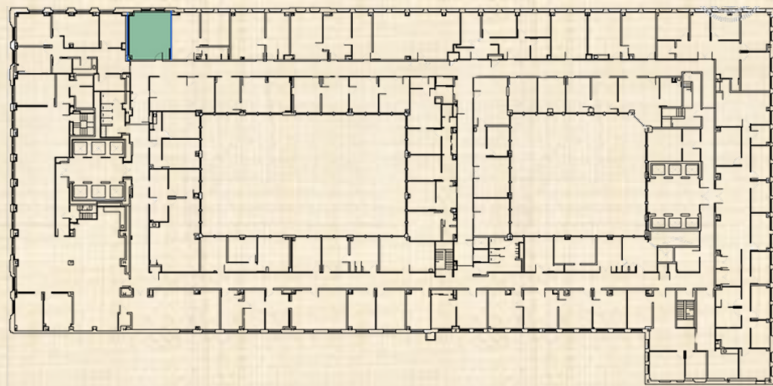
- New Finishes
- Free High-Speed Wi-Fi
- Large Open Space
- Exposed 15ft Ceilings
- Bright Natural Light
- Excellent Elevator Identity
- Courtyard Outlooks
- New LED Lights
- Next to New Tenant Lounge



Suite 1064

588 RSF

- New Finishes
- Free High-Speed Wi-Fi
- Large Open Space
- Quiet Office Suite
- Excellent Elevator Identity
- Bright Natural Light
- Airy Atmosphere

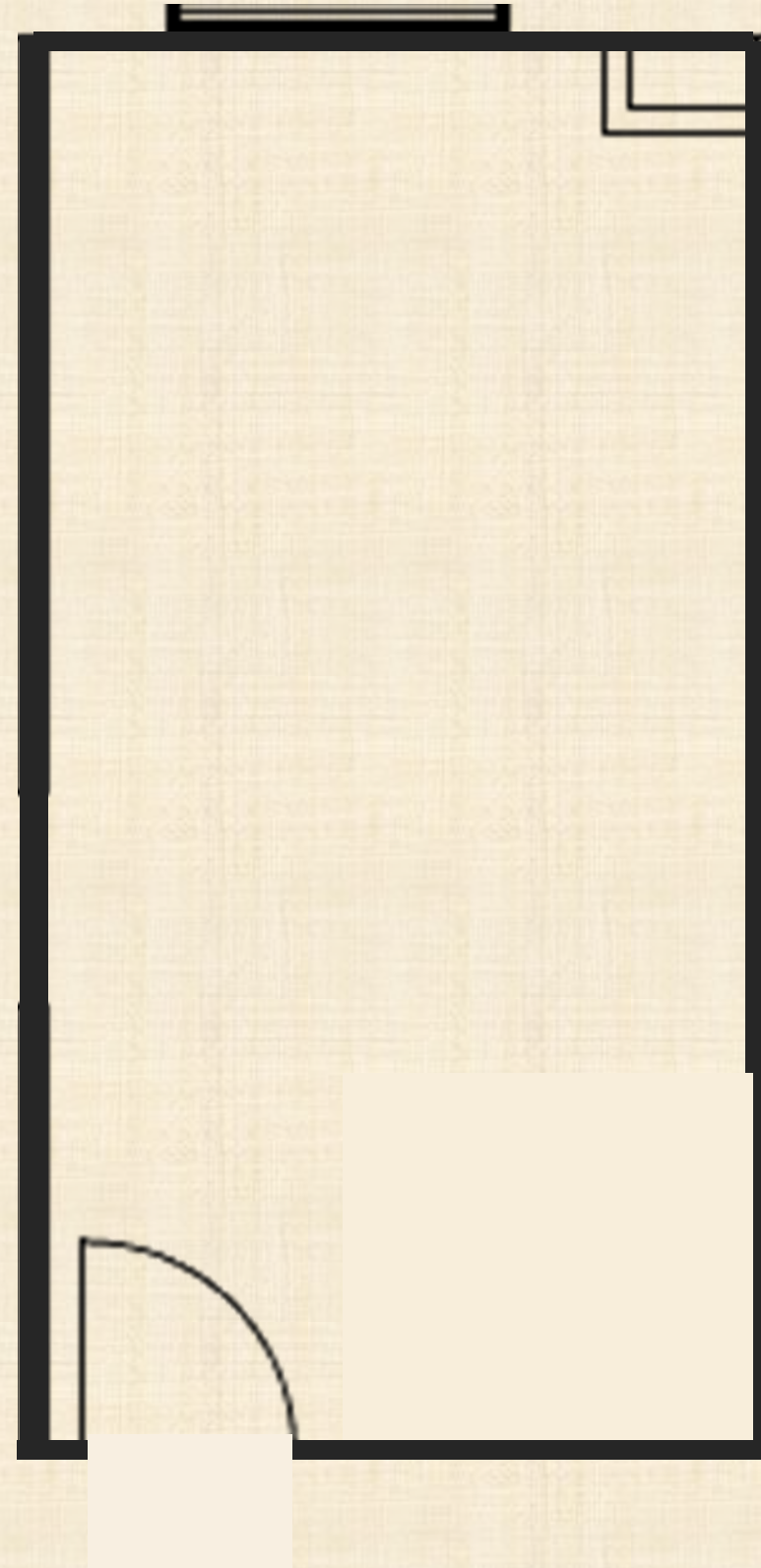
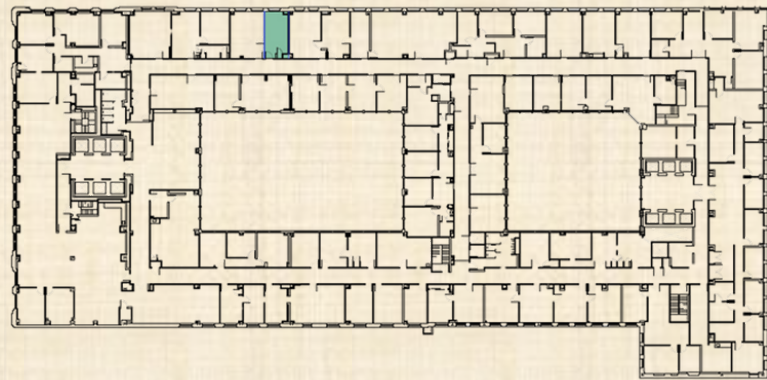


Suite 1070

326 RSF



- New Features
- Free High-Speed Wi-fi
- Large Open Space
- Crown Molding
- Great Elevator Identity
- Bright Natural Light

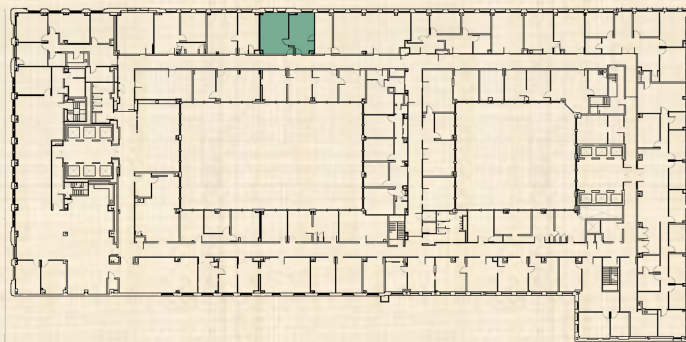
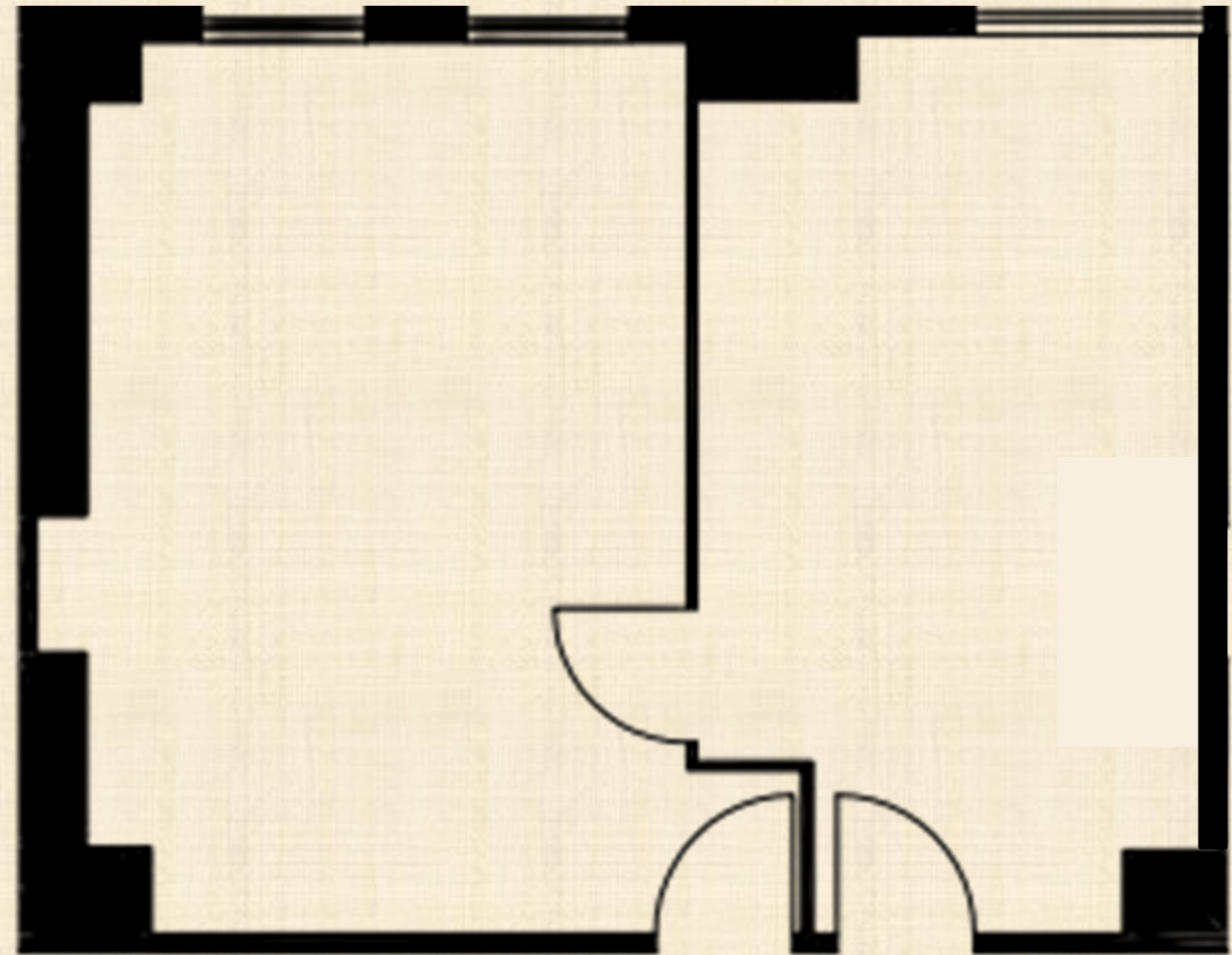


Suite 1072

817 RSF



- New Features
- Free High-Speed Wi-Fi
- Tandem Office
- Excellent Storage
- 12 ft High Ceiling
- Bright Natural Light

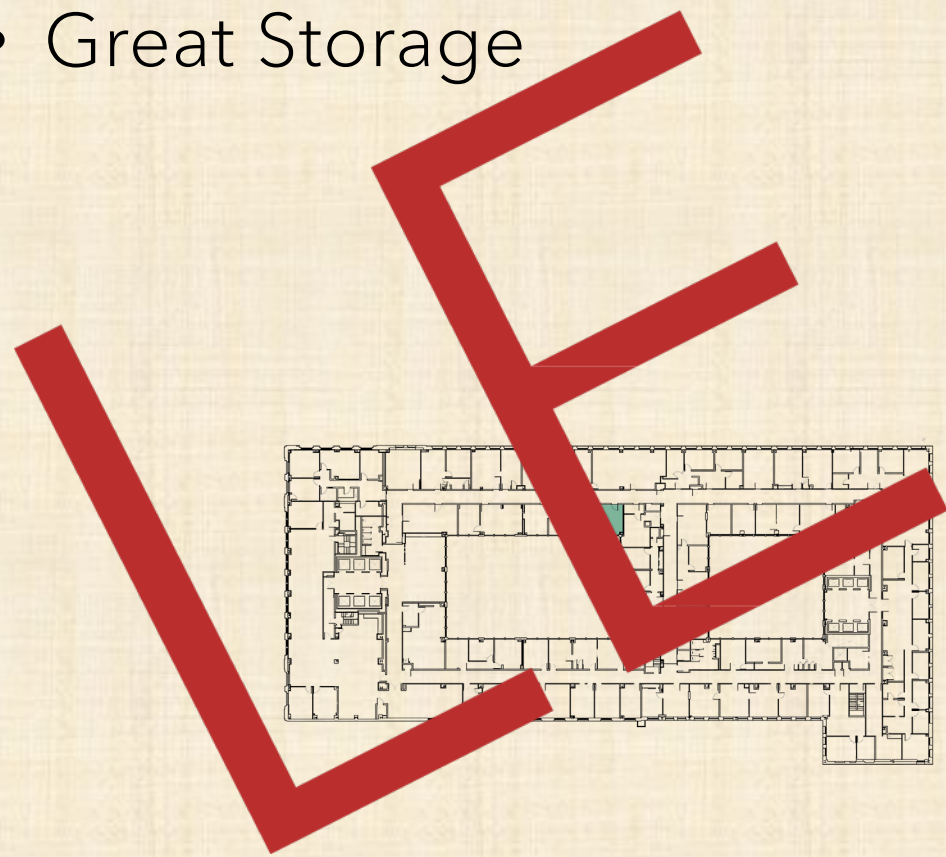


Suite 1077

610 RSF



- Tandem Office
- Bright Natural Light
- Courtyard Outlooks
- Quiet Suite
- Great Storage



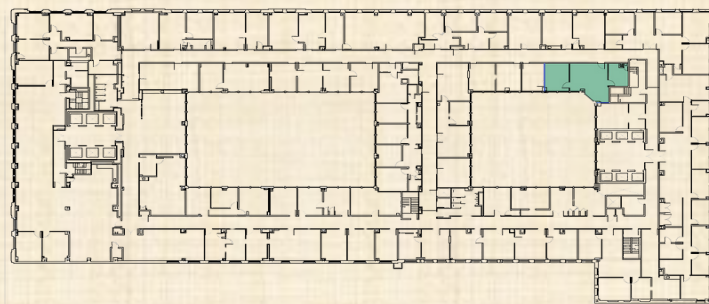
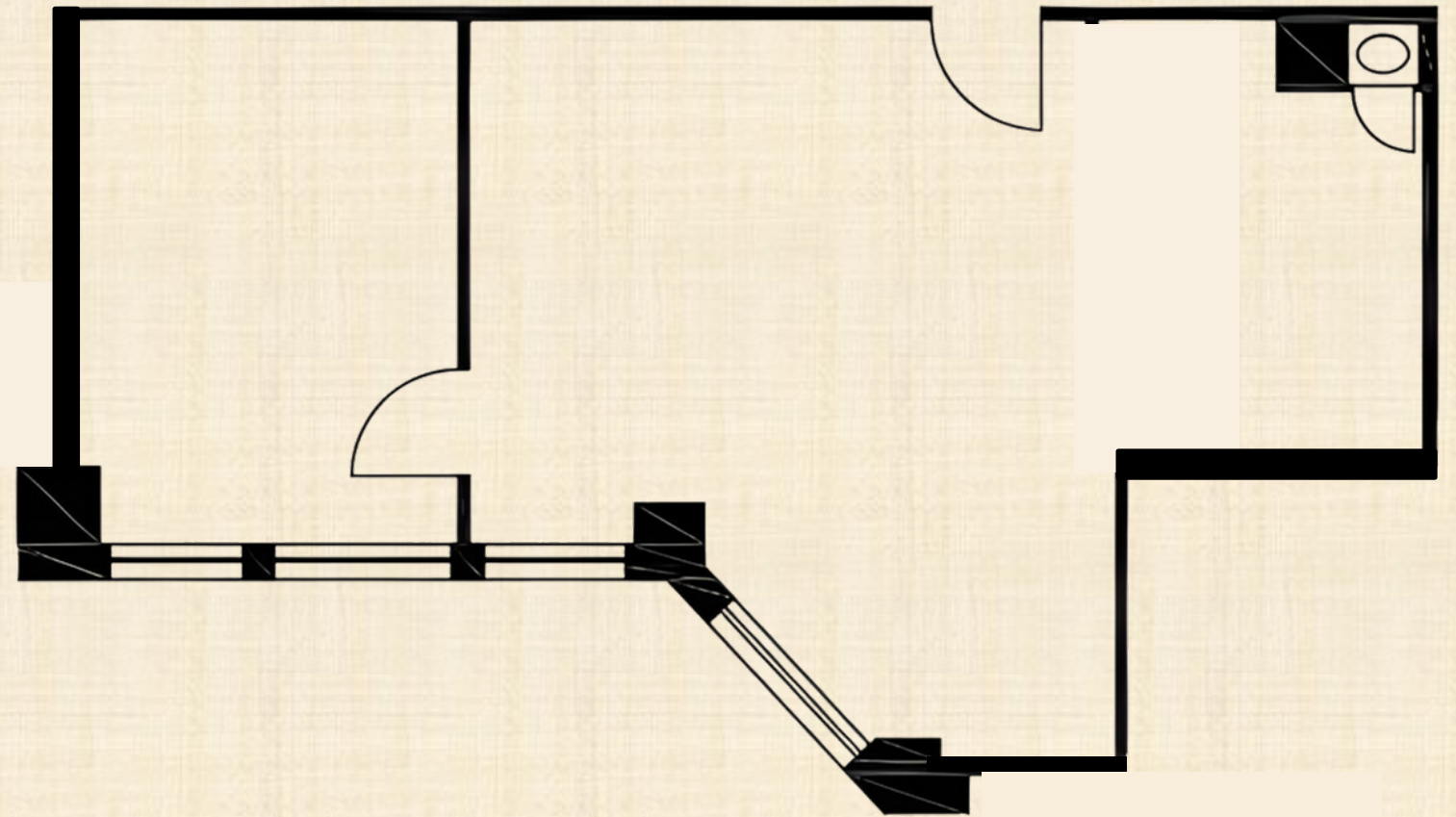
LEASED

Suite 1093

955 RSF



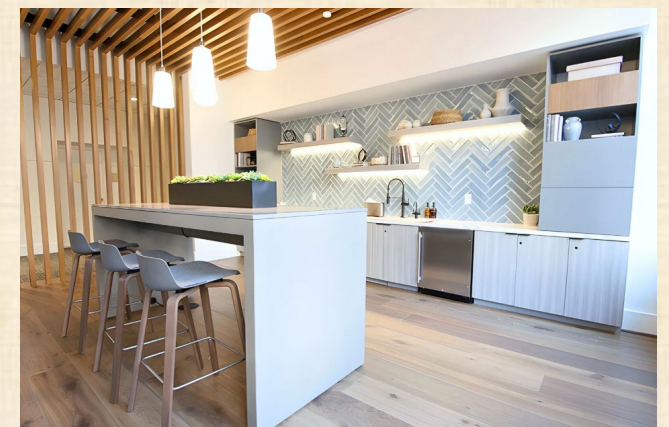
- New Finishes
- Free High-Speed Wi-Fi
- Large Open Space
- Private Conference Room
- Excellent Elevator Identity
- Bright Natural Light



New 10th Floor Tenant Lounge

FEATURES:

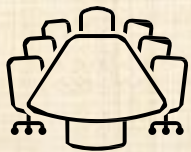
- Free Fiber Backed, High-Speed Wi-Fi
- 2 Stylish Four- Top Tables
- Beautiful Island With Chairs
- Comfortable Couch & Lounge Chairs
- Coffee Machine
- Refrigerator
- Microwave



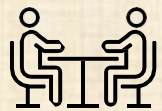
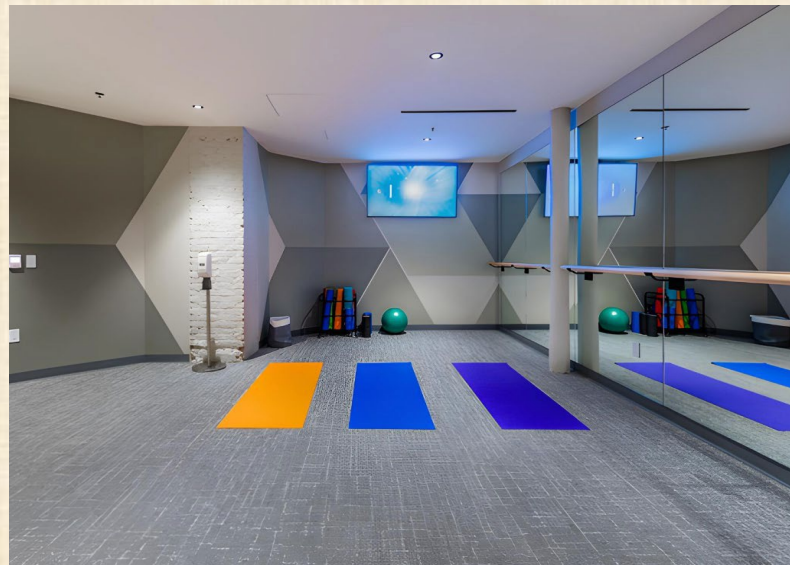
ELEVATE YOUR WORKDAY



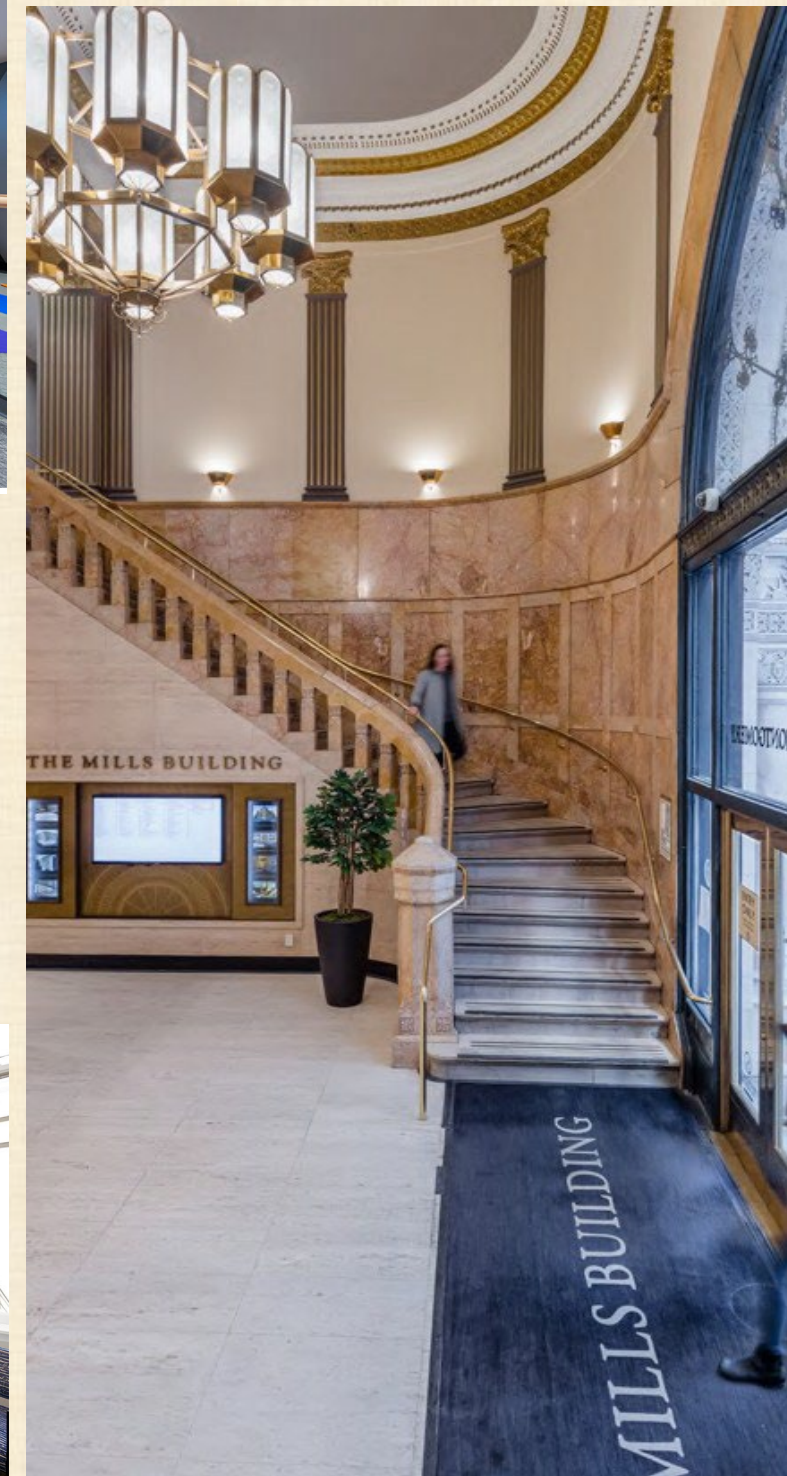
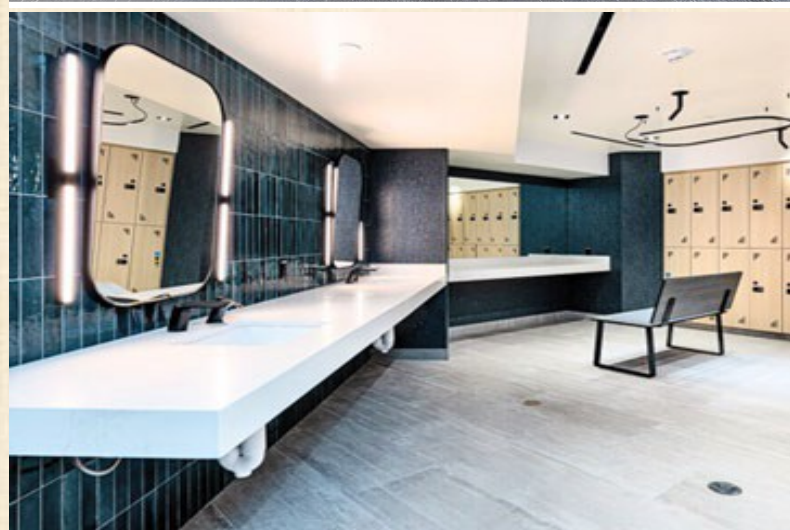
Updated Lobby



Top-Tier Conference Center



Tenant Lounges



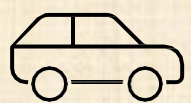
Wellness Room



Shower & Locker Facilities



Expanded Bike Storage



On-Site Valet Parking



Thank You

Book a Tour Today:

David Fuelle-

(415) 438-8795

dfuelle@swigco.com