

Floor 3

Suite 3 7

~ 48 Rentable Square Feet

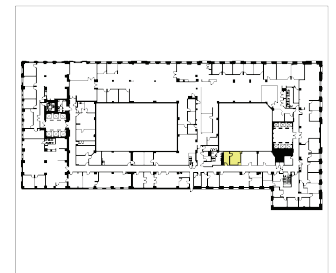
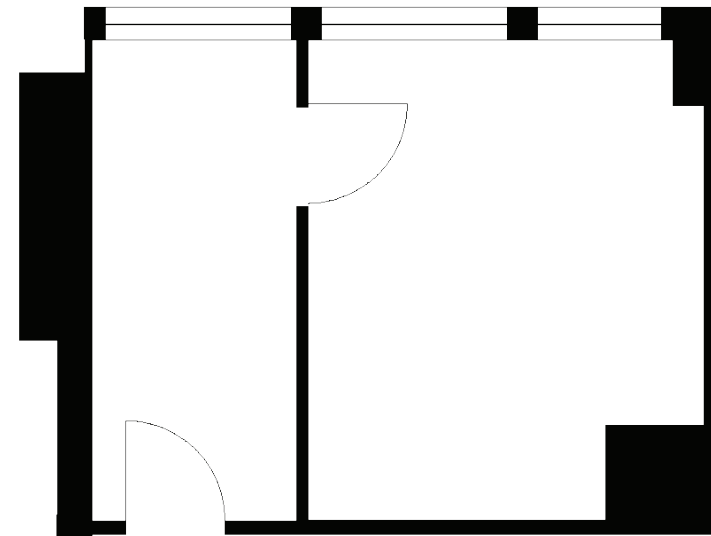
- 1 Private Office with Storage Closet
- Reception Area
- Garden View

NOW \$1,044 per month

*Net of Prop C taxes at 3.5%

David Fuelle
dfuelle@swigco.com
415 244-7806

220 Montgomery St.
San Francisco, CA 94104



Third Floor Inset