

Floor 4

Suite 4

~245 Rentable Square Feet

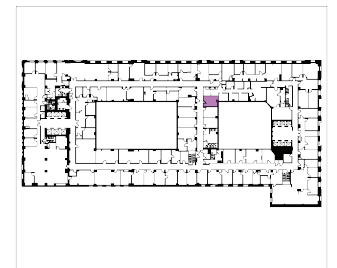
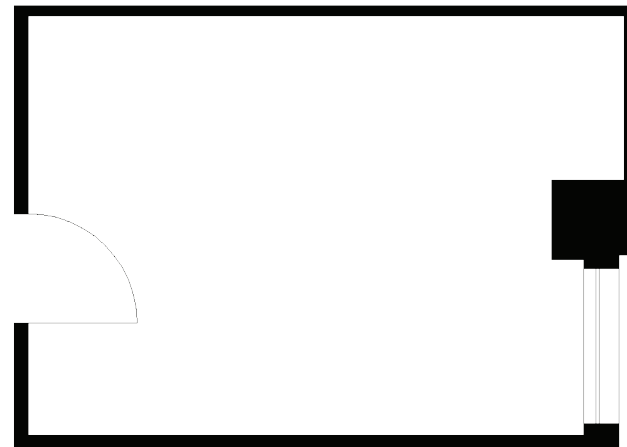
- 1 Large Open Work Area
- Garden View

NOW \$7 per month

*Net of Prop C taxes at 3.5%

David Fuelle
dfuelle@swigco.com
415 244-7806

220 Montgomery St.
San Francisco, CA 94104



Fourth Floor Inset